

**Elcometer RCV4000**

**Elcometer RCV4000 Exhaust Silencer**

The **Elcometer RCV4000 Exhaust Silencer** reduces the noise level of compressed air as it exhausts from the blast machine.

Rugged silencer, with a choice of plastic or metal replacement silencer cartridges

Easy and fast to dismantle for servicing



**Part Numbers**

Part Number	Description
<b>SES-B</b>	Elcometer RCV4000 Exhaust Silencer complete with Plastic Silencer Cartridge

**Spare Parts**

Part Number	Description
<b>SES-INSERT</b>	Replacement Exhaust Silencer Cartridge - Plastic
<b>MT30028</b>	Replacement Exhaust Silencer Cartridge - Metal
<b>MT28599-B</b>	3/4" (19mm) Reinforced Union Elbow

**Elcometer RCV4000**

**Elcometer RCV4000 Exhaust T**



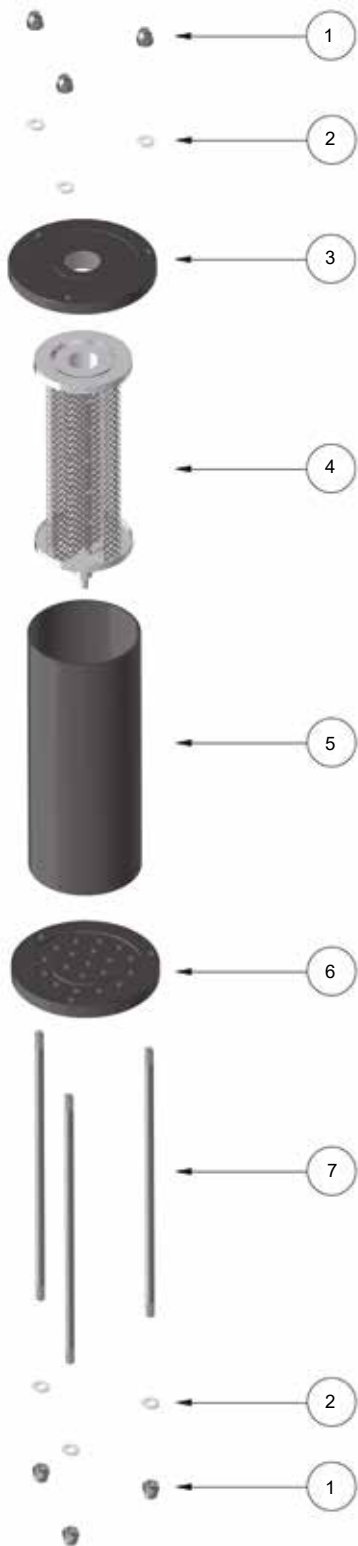
Elcometer's Exhaust Ts are fitted with a sacrificial wearplate nut that can be replaced in seconds so you do not have to replace the entire Exhaust T.

**Part Numbers**

Part Number	Description
<b>MT29680-B</b>	1" (25mm) Exhaust T Assembly (complete with MT29681 Exhaust Plug)
<b>MT29681</b>	Replacement Exhaust Plug

Elcometer RCV4000

Exhaust Silencer



Part Numbers

Part Number	Description
<b>MT28597</b>	Elcometer Standard Exhaust Silencer Assembly

Spare Parts

Item	Part Number	Description
1	<b>KIT 1</b>	M6 Dome Nut (x6)
2	<b>KIT 1</b>	M6 Washer (x6)
3	<b>MT30027</b>	Exhaust Silencer Top Cover BSP
4	<b>MT28598</b>	Exhaust Silencer Cartridge - Plastic
-	<b>MT30028</b>	Exhaust Silencer Cartridge - Metal
5	<b>MT30029</b>	Exhaust Silencer Housing
6	<b>MT30030</b>	Exhaust Silencer Bottom Cover Plate
7	<b>KIT 1</b>	M6 x 220 Tie Bar (x3)
-	<b>MT30057</b>	SES Service Kit 1 (contains items 1, 2 & 7)

